



# The Highland Heartbeat

Highland, a Place to be Seen, Known, and Loved

**Sunday, January 4, 2026**

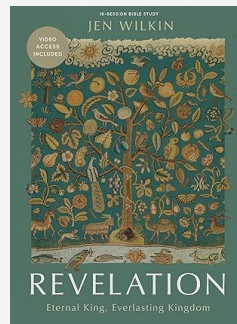
## Adult Sunday School

Start 2026 with a deeper dive into Scripture and good conversation! Join us after worship **today** from **11:30 AM to 12:30 PM** in **Room 204** for a new adult Sunday school series. This study is designed with flexibility in mind: come when you can, jump in at any point, and bring your questions. From January through Easter, we'll journey through the Gospel of Matthew, exploring its sweeping narrative and paying special attention to one of its central themes: the Kingdom of Heaven. Whether you're looking to learn something new, reconnect with Scripture, or simply enjoy thoughtful discussion with others, there's a place for you. We hope you'll join us!



## Women's Bible Study

Looking to start off the new year digging into God's word? We are offering a Women's Bible Study on the book of Revelation by **Jen Wilkin**, starting on **Thursday, January 8**. We will meet from **7:00 to 8:30 PM** in **Room 208**, and finish the series on March 13. Plan to come and learn! The cost of the workbook is **\$25**, which includes video access.



*"Two thousand years ago, John's Revelation was circulated and read aloud among seven churches in Asia Minor. Those who heard the letter understood it and drew encouragement from its message. The same can be true for you today."*

- Jen Wilkin

Contact Barb Droz or the church office if you are interested.

## Exploring "The Bias Inside Us" A Presbytery Learning Opportunity

Highland is committed to learning, reflecting, and growing on our journey of discipleship. To that end, members of Highland are invited to join others from the Presbytery of Donegal for a special visit to *The Bias Inside Us*, a traveling Smithsonian exhibition, on **Thursday, January 8**, at **10:00 AM**.

Hosted by the **Chester County History Center**, the exhibition explores the science and history of human bias. The Smithsonian project is designed not to shame or divide, but to help communities deepen understanding, strengthen empathy, and foster healthy dialogue. Whether you are curious about how the brain makes quick decisions, interested in how communities can communicate across differences, or simply eager to learn from a trusted national institution, this is a thoughtful and engaging opportunity.

This event is open to anyone who wants to learn more about how we as individuals and communities can cultivate fairness, wisdom, and compassion. These are values deeply rooted in Scripture's call to love our neighbors.

Participants will gather at 10:00 AM inside the museum's front entrance for introductions and a brief orientation before exploring the exhibit together. The Presbytery will cover the cost of the exhibit and lunch, and Presbytery members will guide a conversation after lunch. We hope you'll join this meaningful time of learning and reflection.

# Curious Conversations: Practicing Grace Across Our Differences

After two successful pilot sessions, Highland’s Matthew 25 Committee and the Presbytery of Donegal are inviting the wider congregation to join our next **Curious Conversations** gathering. Curious Conversations creates a thoughtful, structured space for people to listen to one another across different viewpoints. This structure focuses on telling our stories as a chance to practice curiosity, compassion, and understanding.

Curious Conversations aligns with Highland’s vision to see, know, and love all God’s people, and with our values of compassion, kindness, love, welcome, and unity. It also aligns with our strategic plan in which we envision Highland as a safe place to have important conversations about difficult issues. Using a centering piece of Scripture and some background information, participants will reflect on a framing question, ask open and curious follow-up questions, and learn to remain in community even when we disagree.

You are welcome to speak or simply listen. Whatever your perspective, your presence enriches the conversation.

## Sunday, January 18

Join us at **2:30 PM**, with a **2:00 PM** orientation for first-time participants. **Please sign up in the Narthex.**

*Come with curiosity.  
Come with kindness.  
Come as you are.*

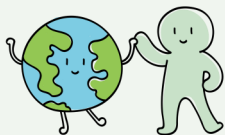
## Exploring a 2026 Trip to El Salvador

On **Sunday, December 14**, a group gathered after worship for an interest meeting about a potential 2026 trip to our mission partner, Juan Calvino, in San Salvador, El Salvador. The conversation was encouraging, and we are excited to continue exploring this opportunity together. We are tentatively targeting early June 2026, but dates are still open for the summer or even the fall. We are planning an eight-day trip, which will include a Sunday, allowing us to worship with the local church.

The trip is open to participants from high school age through adulthood and will emphasize learning, listening, and strengthening relationships.

If you are interested in this trip and would like to be included in our planning, please contact **Pastor Matt** by **Sunday, January 18**, so we can continue discerning next steps together. More details will be shared as plans take shape.

## Earth Care Partner Events



SAT Jan 10	<b>1:00 - 4:00 PM</b> Give Back to Nature at Graham Nature Preserve	
SAT Jan 17	<b>1:00 - 3:00 PM</b> New Year Hike at Welsh Mountain Nature Preserve	
THUR Jan 22	<b>6:00 - 7:00 PM</b> Nature Hour: How to Love a Forest	

## Wednesday Morning Breakfast Group

Interested in good fellowship, good discussions, & a good breakfast too? The Highland men’s breakfast group meets at **Oregon Dairy** on **Wednesday mornings** from **7:30 to 9:00 AM**. Each week, we read a book and discuss a chapter or two. We take turns leading the discussion; some days there’s no leader, just conversation, and we welcome those who’d simply like to listen as well. Book topics vary from theology (we are currently reading Elaine Pagels’ *Miracles and Wonder*), to history (recent biographies of Lincoln and Franklin), to works that challenge our thinking (*The Tipping Point*, *Talking to Strangers*, and books on artificial intelligence). In the new year, we will start a new book to be determined in the coming weeks. Please contact Dick Entz for more details!



## Reverse Advent Calendar: Thank You!

We are grateful for the food contributions made during December — your generosity helped provide nourishment and support to many individuals and families in Lancaster County. Although the Reverse Advent Food Calendar has ended, the need for food has not. If you’re able, please continue to bring in items to support our food cupboard and the Lancaster Food Hub!

## Update from Pastor Matt

### Travel Seminar to India

From December 27 to January 16, Claire and I will be in India as part of an international travel seminar through Union Presbyterian Seminary. This seminar brings together current seminary students and graduates to study theological education and the practice of Christianity in a context very different from our own. A central focus of the trip is visiting seminaries and theological colleges across the country, where we will meet with students, faculty, and church leaders. We will learn how Christianity is taught and lived in a pluralistic society where it is a minority religion alongside Hinduism and Islam. We will explore what faithful witness and discipleship look like in that setting. We will also visit some of India's cultural and historical landmarks.

This experience will strengthen my ministry at Highland by enriching my theological perspective and deepening my understanding of the global church. I am grateful for your prayers and support, and I look forward to sharing more when I return.

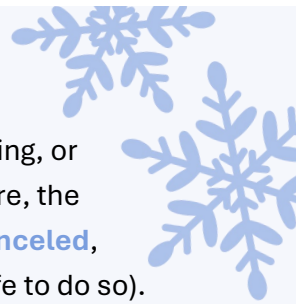
## Winter Weather Closure Policy

Highland Presbyterian Church will continue to monitor [Manheim Township School District](#) (MTSD), but weather decisions will be made based on *actual* conditions and safety, not strictly school status. If Manheim Township School District issues a delay, or if Highland determines road/parking conditions warrant a delay, Highland will operate on a **2-hour delay**.

### Full Closure

A full closure happens when roads, parking, or walkways are unsafe. During a full closure, the office and all in-person programs are **canceled**, with essential staff allowed on site (if safe to do so).

**Announcements** will be made via the church website, email, social media, WGAL, and phone message. Outside groups will be notified directly.



## Highland Happenings

### Women's Christmas Tea

On Saturday, December 20, more than 100 women gathered to celebrate our annual Women's Christmas Tea. Typically held on a weekday, this year's event took place on a Saturday, making it easier for women of all ages to attend. Attendees enjoyed a welcoming atmosphere filled with meaningful fellowship, lively conversation, and shared experiences. A wide variety of delicious food and refreshments were provided, ensuring there was something for everyone to enjoy! The event was an overwhelming success, made possible by the dedication of our many volunteers and the thoughtful planning and preparation of our staff. Together, their efforts created a memorable and joyful celebration that truly reflected the spirit of the season!





# Worship



## This Week’s Scripture

Isaiah 60:1-3, Matthew 2:1-12  
“Gifts That Keep On Giving:  
Unexpected Gifts”  
Rev. Allison Beaulieu

## Upcoming Preaching Schedule

**January 11**  
Rev. Allison Beaulieu

## Gifts That Keep On Giving

Sermon Series: January 4 - February 1

This sermon series follows the lectionary passages from the Gospel of Matthew for the first five Sundays of the new year (with the exception of January 18, when we will step outside the lectionary in order to remain in Matthew).

The birth of Jesus is indeed a gift to all humanity. Unlike most gifts that are given and received once, however, the gift of our Savior continues to bless us over time. While Jesus’ birth was a single, historical event, the grace and love we welcome through it are ongoing, shaping our hearts, guiding our thoughts, and directing our actions.

Jesus’ arrival is meant to transform us not only on one holy night, but in the ordinary rhythms of daily life. During these first five weeks of the new year, we will reflect on how the gift of Jesus continues to bless us, form us, and lovingly challenge us to grow as disciples.

# Upcoming Events

## Thursday, January 8

- 10:00 AM** Exploring *The Bias Inside Us*: A Presbytery Learning Opportunity
- 7:00 PM** Ladies Night Out at Harvest

## Sunday, January 18

- 2:30 PM** Curious Conversations: Practicing Grace Across Our Differences

## Worship Times

Ignite Worship | 9:30 AM  
Traditional Worship | 10:00 AM

## Program Staff

Senior Pastor — Rev. Allison Beaulieu  
Pastor for Congregational Care — Rev. Dr. Ann Osborne  
Associate Pastor for Missions & Discipleship — Rev. Matt Drumheller  
Parish Associate — Rev. Dr. Bob Burns  
Parish Associate — Rev. Ken Osborne  
Music Director — Dr. Paul Thorlakson  
Ignite Worship Leader — Dr. Jeffrey Martin  
IT/Media Coordinator & Organist — Jonathan Lefever  
Director of Children, Youth, & Family Ministries — Sarah Hostetter



## Office Hours

**Monday - Thursday**  
9:00 AM to 3:00 PM

**Friday**  
9:00 AM to 12:00 PM

## Contact Information

717-569-2651  
[www.HighlandPC.org](http://www.HighlandPC.org)  
500 East Roseville Road  
Lancaster, Pennsylvania 17601

For staff contact information, visit our website at [www.highlandpc.org](http://www.highlandpc.org) and go to **About Us > Staff**, or ask the reception desk for a copy of our Staff & Committee Contacts brochure.

*Highland: A Place to be  
Seen, Known, & Loved*

## Year to Date Finances

As of November 30, 2025  
Expenses exceed revenues by \$90,000

	Actual	Budget	Difference
Revenue	\$1,098,000	\$1,334,000	- \$236,000
Expenses	\$1,188,000	\$1,311,000	- \$123,000